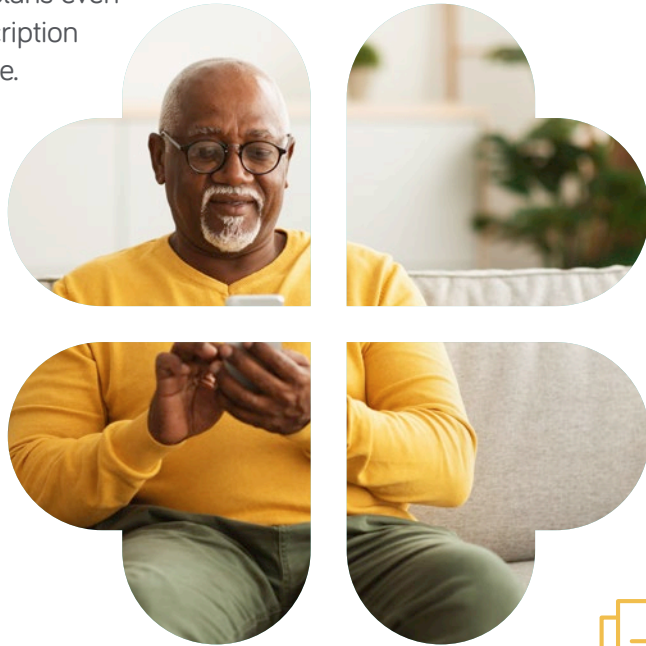


## This is Medicare Advantage— Created in Indiana, for Indiana.

At MyTruAdvantage, we provide what you expect when choosing a plan—everything you would get from Original Medicare, plus zero-dollar premiums, virtual care, and rich supplemental benefits. Most of our plans even include prescription drug coverage.



### Available Plans

MyTruAdvantage offers two types of plans to fit your specific needs. Our HMOs offer low cost-shares and rich benefits that cover services with in-network doctors and hospitals. Our PPOs offer coverage for services received from both in-network and out-of-network doctors and hospitals locally and when you are traveling.



## The Advantages Add Up On All MyTruAdvantage Plans.

**\$0** member premium

**\$0** medical deductibles

**\$0** primary care copay



## Ask for a FREE Information and Enrollment Kit!

### Call, Email or Download:

Phone: (833) 213-6731 (TTY: 711)

Email: [info@MyTruAdvantage.com](mailto:info@MyTruAdvantage.com)

Web: [MyTruAdvantage.com](http://MyTruAdvantage.com)



### Top Dental Coverage

\$0 copay dental coverage up to \$2,560 for HMO plans and up to \$2,340 for PPO plans.



### Over-the-counter Flexibility

Shop with flexibility through CVS with an allowance of up to \$100 quarterly to spend on over-the-counter products.



### Clear Vision Benefits

Experience ease with a vision flex card with an annual allowance of \$250 to be used towards all covered eye exams, eyewear, and services.



### Hearing and Hearing Aid Coverage

You'll have access to \$0 in-network exams and exclusive pricing on high-quality prescription hearing aids through TruHearing™. Benefit covers up to two TruHearing™ hearing aids per year with low copayments starting at \$399.



### Fitness Benefit

Enjoy a complete fitness program built to fit your lifestyle with the Silver&Fit™ program. Access participating fitness centers, on-demand workouts, choose a home fitness kit and more. Please visit [SilverandFit.com](http://SilverandFit.com) to find a participating fitness center near you.

## Developed by Local Doctors and Hospitals.

MyTruAdvantage is a Medicare Advantage plan that serves the people of Indiana, like you. All our associates work in Indiana. So, when you call us, you might be talking to your neighbor.

MyTruAdvantage was founded by Indiana-based doctors and hospitals including Columbus Regional Health, Community Health Network, Deaconess Health System, Schneck Medical Center and Union Health.



### When can I enroll in Medicare?

Most people are eligible to enroll in Medicare during their initial enrollment period (IEP), which starts the three months before your 65th birthday and goes until three months after the month you turn 65.

*For example, if your birthday is April 15, your IEP runs January 1 to July 31 of the year you turn 65.*

### When can I change my plan?

After you've signed up for Medicare, you can change plans each year during the annual election period (AEP) from October 15 to December 7.

### Please call, email, or visit online to learn more and enroll.

**Phone:** (833) 213-6731 (TTY: 711)

**Email:** [info@MyTruAdvantage.com](mailto:info@MyTruAdvantage.com)

**Web:** [MyTruAdvantage.com](http://MyTruAdvantage.com)

Other providers are available in our network. MyTruAdvantage has HMO and PPO plans with a Medicare contract. Enrollment in MyTruAdvantage depends on contract renewal.

MyTruAdvantage complies with applicable Federal civil rights laws and does not discriminate on the basis of race, color, national origin, age, disability, or sex.

ATENCIÓN: si habla español, tiene a su disposición servicios gratuitos de asistencia lingüística. Llame al 1.844.425.4280 (TTY x711)

注意：如果您使用繁體中文，您可以免費獲得語言援助服務。請致電 1.844.425.4280 (TTY x711)。



Indiana's own Medicare Advantage plan.



*Exploring Medicare Advantage options has never been easier. Enjoy the freedom, flexibility, and ease that MyTruAdvantage offers.*